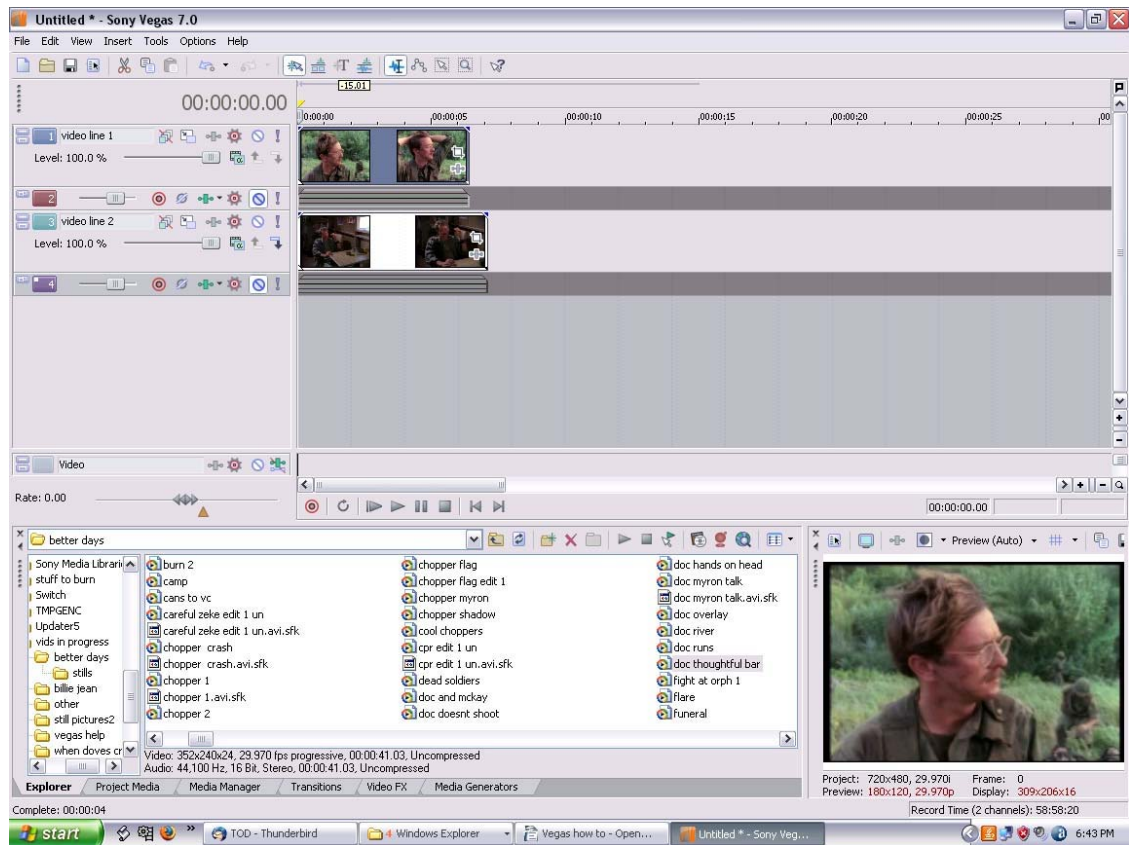


PICTURE IN PICTURE (easier than MASK)

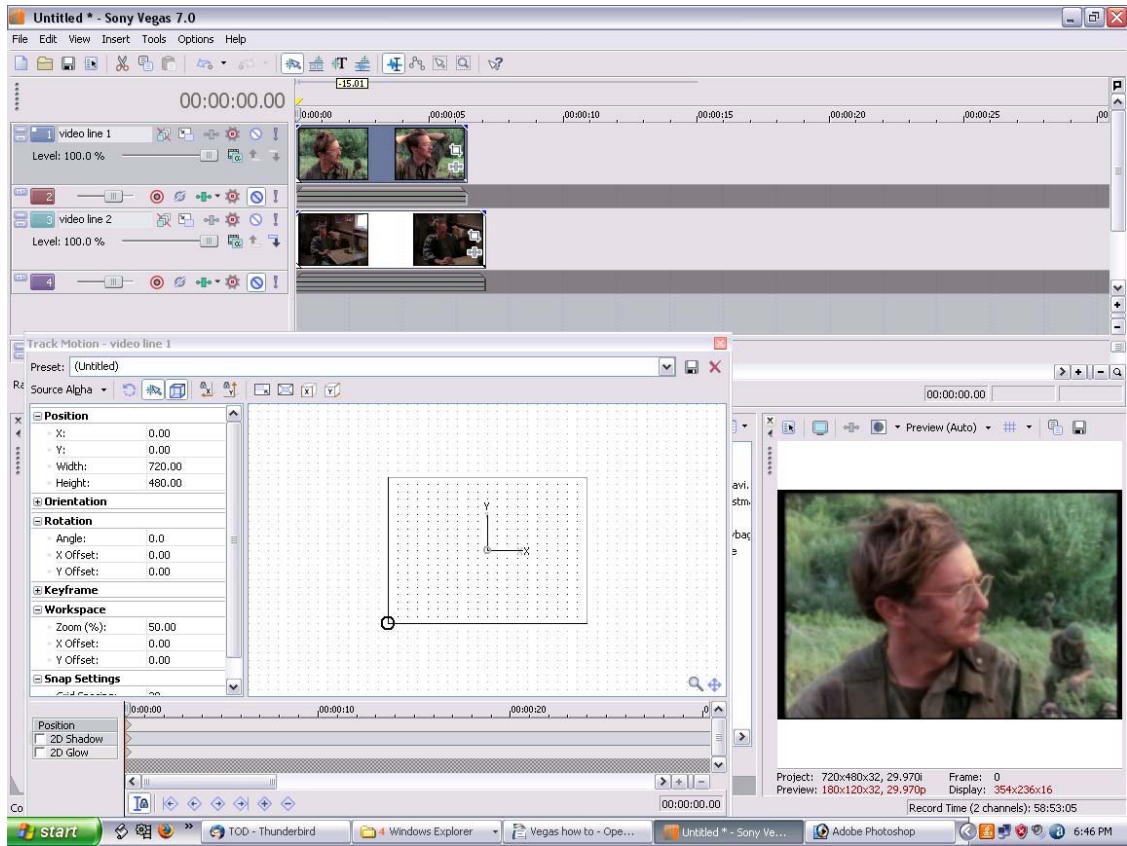
** The 'foreground' clip (clip1) ALWAYS goes in the track physically -above- the 'background' clip (clip2), else they will get reversed and the foreground becomes the background! ***

Place clip one (to be inserted) in Video track 1. Place clip 2 in Video track 2.

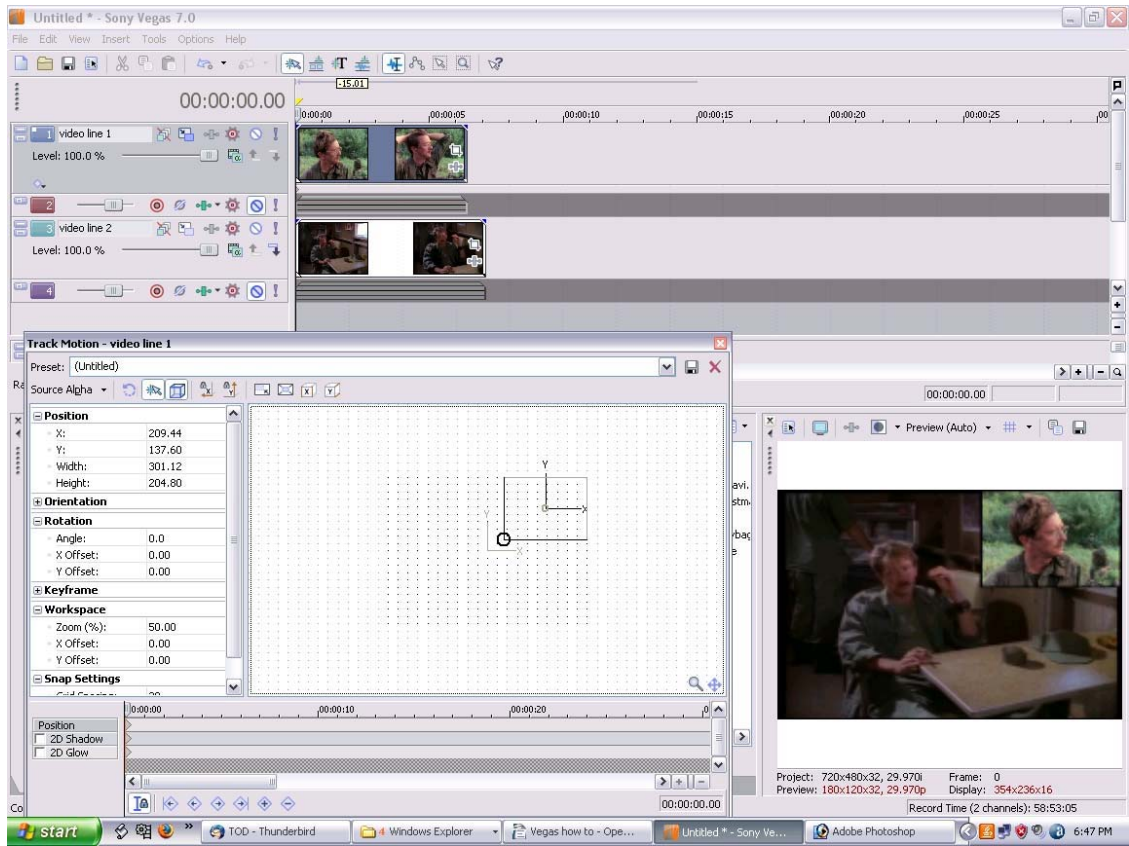


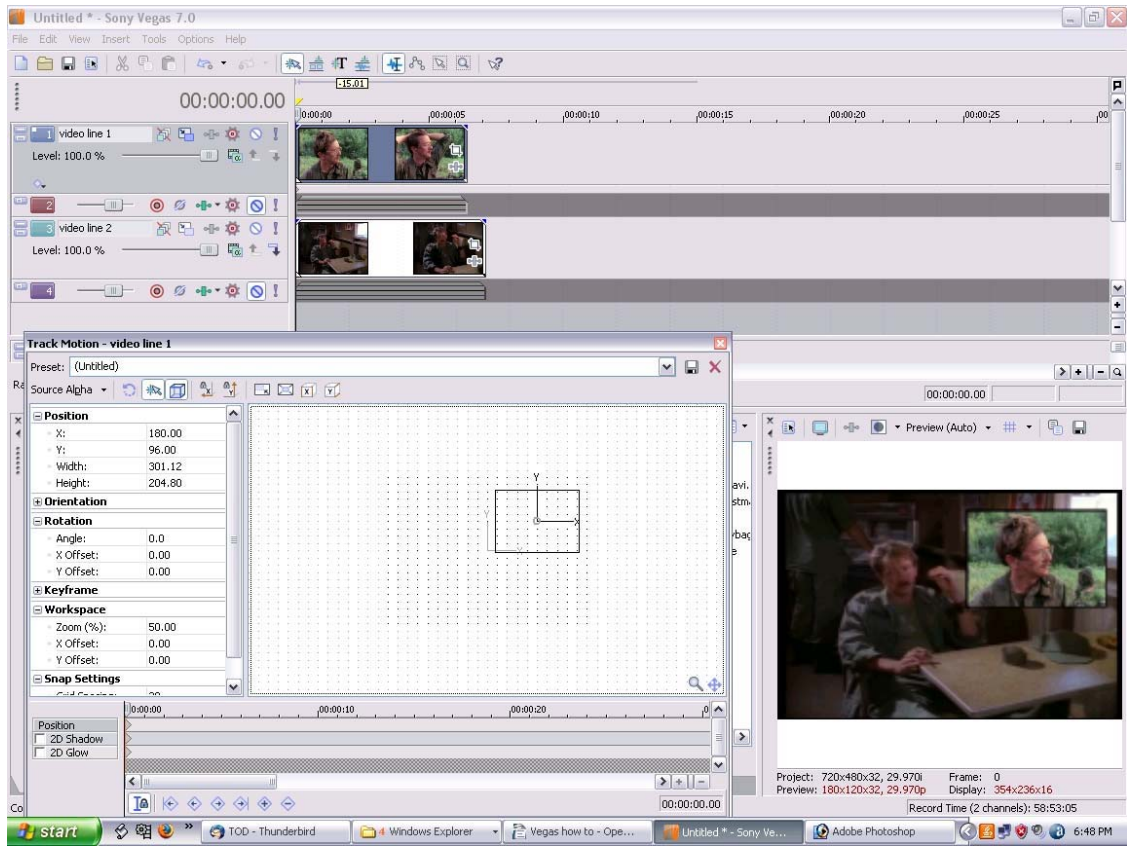
Click beginning of clip 1 to select it to work with.

Click "Track Motion" in the left window for that clip.

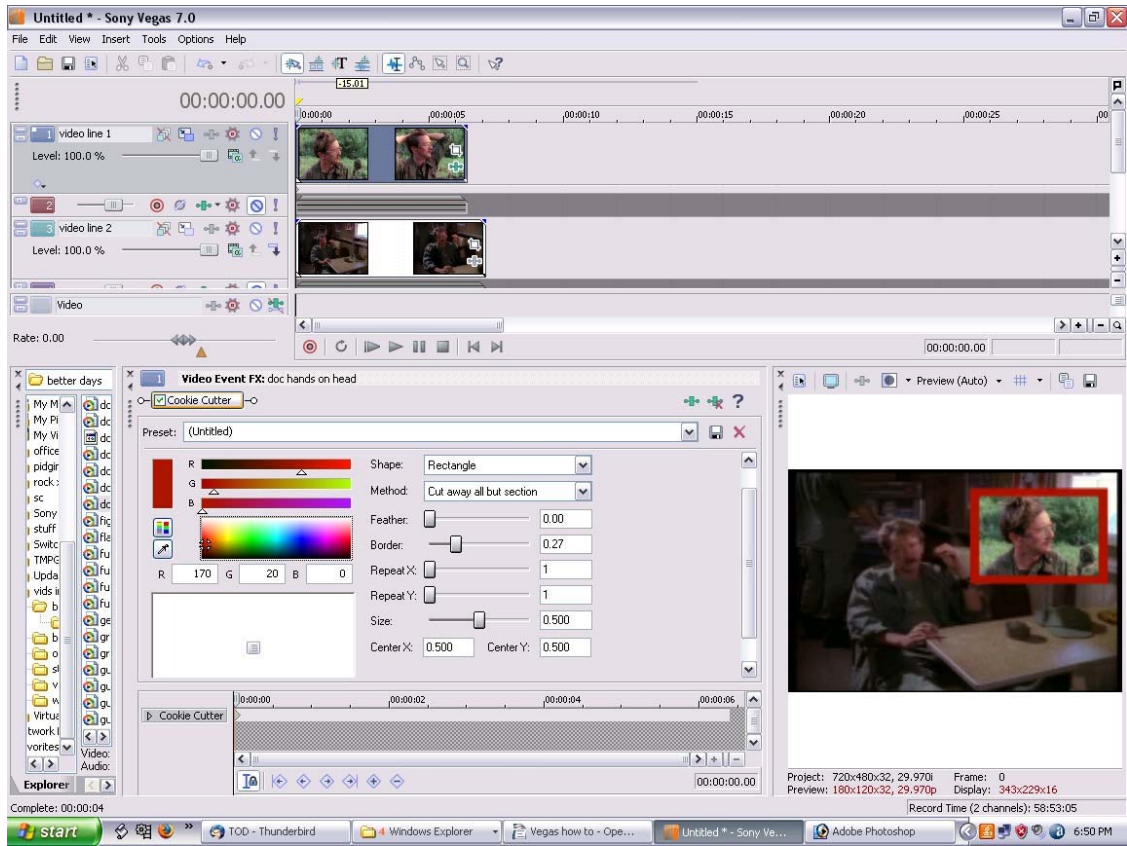


Click and drag edges of box to make clip smaller or larger. Click and drag entire box to re-position.





Apply desired FX and or transitions to clip 1 and 2.



Advanced section (no jpegs yet):

** You can also use as cookie cutter type effect as in "Billie Jean" - 'Johnson's eyes'

Put clip "Johnson" on line 1, adjust length. Put cursor on the very beginning of clip. (THIS clip gets all the effects)

Click event pan/crop, (looks like: white square in lower right of clip) make sure 'move freely' is highlighted on left hand of window (blue cross with arrows at each corner)

Grab corners and edges of frame and drag to desired size and placement (around eyes). DON'T be alarmed that it is not the right size, we fix that with TRACK MOTION later.

Close window (there is no SAVE, just red X in upper right corner)

Click Event FX (looks like: a cross in the lower right corner of clip), choose cookie cutter.

Choose rectangle from drop down menu, choose color, adjust size, feathering and border width. You can also apply secondary effects like black and white, add noise etc.

Use keyframes (looks like: little diamonds at the bottom of the Event FX windows) to adjust where you want the effects to start and stop.

Put clip "Johnson" on line 2, adjust length.

Go back the line 1. Place cursor at the very beginning of the clip, else it will drag the rectangle all over hell where you don't want it.

Click TRACK MOTION icon in left sidebar window (looks like: two blue squares with an arrow in the bigger one)

Click and drag: from the corners to adjust size and drag to adjust placement (you can only get this right if the second clip is on line 2)

Add fade in/out if desired by dragging the fade lines at the beginning and end of clip.